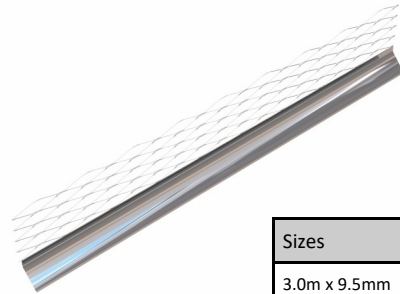
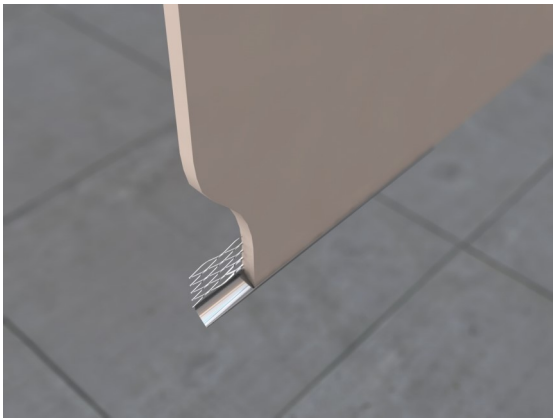


Galvanised Plasterboard Edge Bead

Product description/ specification:

This product is a bead to reinforce the edges of plasterboard which can be fixed on either with the perforated flange on the face of the board by nailing and skimmed over or with the short flange on the board face for a decorative edge finish. Internal use only.

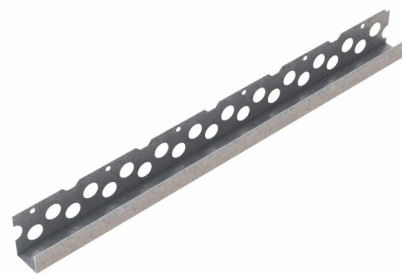
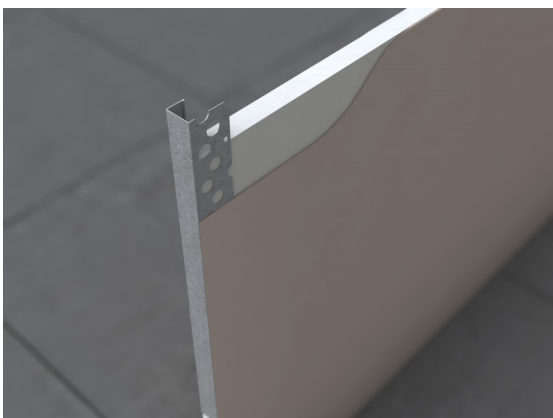


Sizes	Per box
3.0m x 9.5mm	50 lengths
3.0m x 12mm	50 lengths
3.0m x 15mm	50 lengths

Stainless Steel External Render (Bell) Bead

Product description/ specification:

This product is used where a neat drip or 'bell-end' lower edge is needed on external render. Fixed by mortar dabs or stainless steel nails.



Sizes	Per box
3.0m	50 lengths