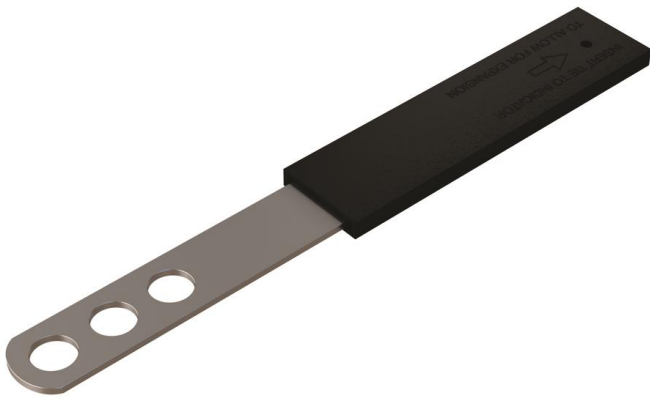


Safety Plain End Tie

Movement Ties

This range of ties allows masonry walls to be tied back to other structures, (steelwork or masonry) providing restraint in one direction but allowing movement in the other. This is achieved by placing a debonding sleeve over the part of the tie which is to be embedded in the wall, allowing the tie to move within the sleeve. Also used in movement joints where they occur in long runs of brickwork, the ties spanning over a vertical joint preventing vertical movement but allowing horizontal expansion and contraction.



SPE Safety Plain End Tie

Used over a movement joint in a run of brickwork or blockwork with safety embedment detail or plan end (B20)

Sizes:
 150mm
 175mm
 200mm
 225mm
 250mm
 275mm
 300mm

Performance

SPE 150-300mm	
Shear Load Capacity	2060N
Minimum Embedment	62.5mm
Maximum Mortar Joint	10mm

Safety Precautions

SPE Safety Plain End Ties are manufactured from sheared plate and strip so may contain sharp edges. Suitable personal protection should always be used when handling/installing these products.