

Self Tapping Screw

Product Description/ Specification

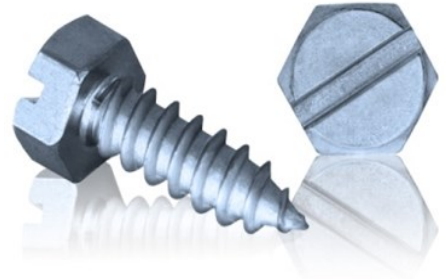
BS Stainless supply a wide range of self tapping screws, the details on various types of screws and washers are given below.

The screws are manufactured from a range of materials including, Stainless steel grades 316, 304 and Zinc plated steel. Special screws for highly specific applications are manufactured from special grade materials including duplex stainless steel.

Please refer to Super self tapping screw and Duplex self tapping screw datasheets*.

All products are sourced from suppliers who meet our stringent quality standards and are compliant with relevant BS EN / DIN standards.

Screws coated with innovative silver GL coating are also available for improved surface properties. The coating provides high abrasion, weather and corrosion resistance. Unless specified at the time of order, BS Stainless reserves the right to supply either of standard and silver GL coated screws based on availability at not extra cost.



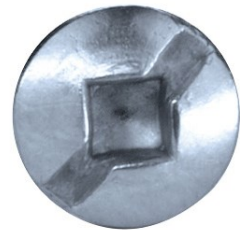
Screw Heads:



Hexagonal Head



Pan Head

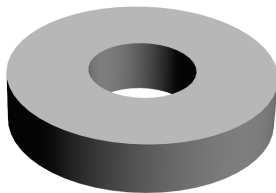


Pan Head with Square Drive

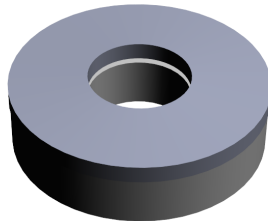
Washers:

The screws can be supplied with washers if requested. We can supply 3 types of washers:

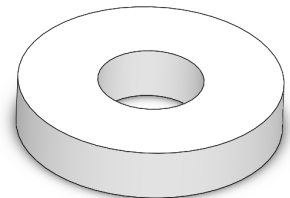
- Waterproof and oil resistant Polyamide / EPDM / Neoprene washers which have a service temperature range of +10 °C to + 85 °C.
- Bonded Stainless steel 316 with EPDM or Neoprene washers to form a waterproof seal and further improve the service temperature range to - 30 °C to + 130 °C.



EPDM / Neoprene Washer



SS316—EPDM / Neoprene bonded washer



Polyamide Washer

* For detailed information and product datasheet of these screws, please contact us at info@bsstainless.co.uk

